



**ESTA**  
CONSTRUCTION

## OUR VISION

Sustainable in all geographies and sectors in which we operate as a dynamic company that aims to grow the customer wants and needs fully meets original, creative, innovative, high quality, being one of the global construction market with high value-added and cost-effective solution reputable and inspiring players.

## OUR MISSION

As ESTA Construction, we are committed to growing sustainably and steadily, responsive to community and environmental awareness. Under all circumstances, our result-oriented philosophy combines high business ethics and reliability with value-added solutions to enable our business partners (suppliers, employers, investors and employees) to create productive, commercial, productive and long-term relationships, combining with our employers, we build customer loyalty attached to the unconditional satisfaction.



## Construction

Esta Construction performs turnkey facility construction of any scale: stadiums, airports, shopping centers, industrial enterprises, housing complexes. We also carry out the necessary landscape work as well as build the infrastructure facilities. We have projects and branches all around the world: in Russia, the CIS countries, Turkey, Europe, the Near and Middle East, Africa. Esta Construction number one priority is safety of people and the environment. Our works are always of high quality and with fair pricing.



## Real Estate Development

Our company division Real Estate Esta Development offers a wide range of services aiming to helping you produce a successful real estate project. Esta Construction combines the experience of building projects of various levels with the innovations of the modern real estate market. We offer our services at every stage of the development process including leasing and management.



## Land Development

The Esta Land Development division offers customers and investors a wide range of services, including the selection and supply of land plots suitable for a particular investment, the preparation of an analysis of investment costs, including the volume of investments with the realization of a land plot, as well as details of the use and completion of construction works, finishing work, planning and design. Thanks to our qualified staff we are able to offer you this at a reasonable price.



## Construction Control and Consulting

Esta Construction provides all types of engineering, operational, consulting services, as well as Project supervision services thanks to the trained, experienced and dynamic staff represented in the company. In addition to a competent team, Esta has a technological infrastructure, so the company can provide customers and investors with all of these services at reasonable prices.



## From Zero to Launch

Thanks to our technical and human resources, we are ready for the construction and development of a project of any complexity - we can do anything!

## Financial Potential



We play a significant role in financing our projects at the expense of equity, and also have a high level of credit worthiness. Esta Construction is not bound by a large number of partners, which makes us flexible and efficient in making decisions.



## Experience

Our company has been present on the market since 2006, our portfolio includes successful projects of various directions - from housing complexes, hotels, healthcare facilities, hospitals to factories.



## Human Resources

Most of Esta Construction employees have been a part of our team since the beginning. Our employees are young and dynamic representatives of different cultures and nations with work experience both in Russia and abroad. We are able to carry out projects in record time, thanks to the harmony and mutual understanding developed over many years together.



## Equipment

We have over 300 units of heavy construction machinery and equipment. Due to this, we do not attract subcontractors. Esta Construction is ready for additional needs of any complexity - we have a wide base of lessors of special Human Resources machinery and equipment

# Project Categories



Industrial Complexes



Sport Facilities



Residential Buildings,  
Hotels and Healthcare  
Facilities



Logistic Centers



Shopping Mall



Hypermarkets



Business Centers

> 3,000,000 m<sup>2</sup> total area

2006

Tander Head Office-1 Krasnodar, 16.000 m<sup>2</sup>  
Tander Magnit Saratov Hypermarket, 11.300 m<sup>2</sup>  
27,300 m<sup>2</sup>

2008-2009

Tander Magnit Kamishin Hypermarket, 11,300 m<sup>2</sup>  
Tander Magnit Tambov Hypermarket, 11,300 m<sup>2</sup>  
FK KRASNODAR CHETUK SPORT COMPLEX /  
ADIGE Phase 1, 12,000 m<sup>2</sup>  
FK KRASNODAR CHETUK SPORT COMPLEX /  
ADIGE Phase 2, 8,500 m<sup>2</sup>  
Tander Magnit Nevinnomiysk Hypermarket, 16,500 m<sup>2</sup>  
Tander Archive Building Krasnodar, 7,725 m<sup>2</sup>  
67,325 m<sup>2</sup>

## 2012-2013

Tander Magnit Chistopol Hypermarket, 10,000 m<sup>2</sup>  
Tander Magnit Nizhnekamsk-1 Hypermarket, 15,900 m<sup>2</sup>  
Tander Magnit Omsk Logistics Center, 14,000 m<sup>2</sup>  
Tander Head Office-3 Krasnodar, 10,300 m<sup>2</sup>  
Uschacevksy Bazaar Moscow, 6,000 m<sup>2</sup>  
KRASNODAR SHOPPING CENTER, 22,348 m<sup>2</sup>  
VORONEJ IVANOVO SHOPPING & BUSINESS  
CENTER, 26,343 m<sup>2</sup>  
Tander Magnit Almetyevsk Hypermarket, 6,400 m<sup>2</sup>  
Tander Magnit Elektrostal Hypermarket, 2,500 m<sup>2</sup>  
Gorkiy Gorod Shopping Mall Sochi, 32,000 m<sup>2</sup>  
Krasnaya Polyana SBERBANK HOTEL VE CONFERENCE  
CENTER, 16,700 m<sup>2</sup>  
**162,491 m<sup>2</sup>**

## 2010-2011

Tander Magnit Vladikavkaz Hypermarket, 16,500 m<sup>2</sup>  
Tander Magnit Mineralniy Vodu Hypermarket, 6,500 m<sup>2</sup>  
TAMBOV Hotel & SHOPPING CENTER, 19,937 m<sup>2</sup>  
TSEMDOLINA HOUSING COMPLEX, 16,000 m<sup>2</sup>  
IVANOVO SHOPPING CENTER, 26,300 m<sup>2</sup>  
Tander Magnit Pyatigorsk Logistics Center, 43,000 m<sup>2</sup>  
IVANOVO SHOPPING & BUSINESS CENTER, 11,000 m<sup>2</sup>  
Tander Magnit Volgadonsk Hypermarket, 7,800 m<sup>2</sup>  
**147,037 m<sup>2</sup>**

## 2014-2015

Pyatigorsk Vershina Shopping Mall, 39,000 m<sup>2</sup>  
Tander Magnit Shakhty Logistics Center, 58,877 m<sup>2</sup>  
Krasnaya Polyana Apart Hotels, 22,171 m<sup>2</sup>  
Bellona Furniture Factory Vladimir, 25,721 m<sup>2</sup>  
Tander Magnit Nizhnekamsk-2 Hypermarket, 7,500 m<sup>2</sup>  
Arfa Park Hotel (5 stars) Sochi, 23,972 m<sup>2</sup>  
Sindika Trade Center, 145,450 m<sup>2</sup>  
Tander Magnit Novoshakhtinsk Hypermarket, 3,500 m<sup>2</sup>  
Tander Magnit Gukovo-1 Hypermarket, 4,122 m<sup>2</sup>  
Tander Magnit Gukovo-2 Hypermarket, 2,491 m<sup>2</sup>  
**332,804 m<sup>2</sup>**

## 2016-2017

FC Krasnodar Stadium, 120,000 m<sup>2</sup>  
Tander Magnit Dmitrov Logistics Center, 55,000 m<sup>2</sup>  
Verna Ekaterinburg Logistics Center, 25,000 m<sup>2</sup>  
Tander Magnit Krasnodar Logistics Center, 66,000 m<sup>2</sup>  
Metropolis-2 Shopping Mall, 98,382 m<sup>2</sup>  
Tander Head Office-4 Krasnodar, 22,170 m<sup>2</sup>  
Moscow City OKO Tower Fit-Out Works, 53,990 m<sup>2</sup>  
Donstroy "Sertdse Stolitsa" Housing  
Complex, 130,000 m<sup>2</sup>  
Ceetrus Togliatti Shopping Mall, 38,000 m<sup>2</sup>  
Tander Magnit Togliatti Logistics Center, 52,000 m<sup>2</sup>  
Krasnodar Park Galitskiy (Central Park), 130,000 m<sup>2</sup>  
Tander Archive Building-2 Krasnodar, 5,909 m<sup>2</sup>  
Tander Head Office-4 Multistorey Car Park  
Krasnodar, 7,000 m<sup>2</sup>  
**803,451 m<sup>2</sup>**



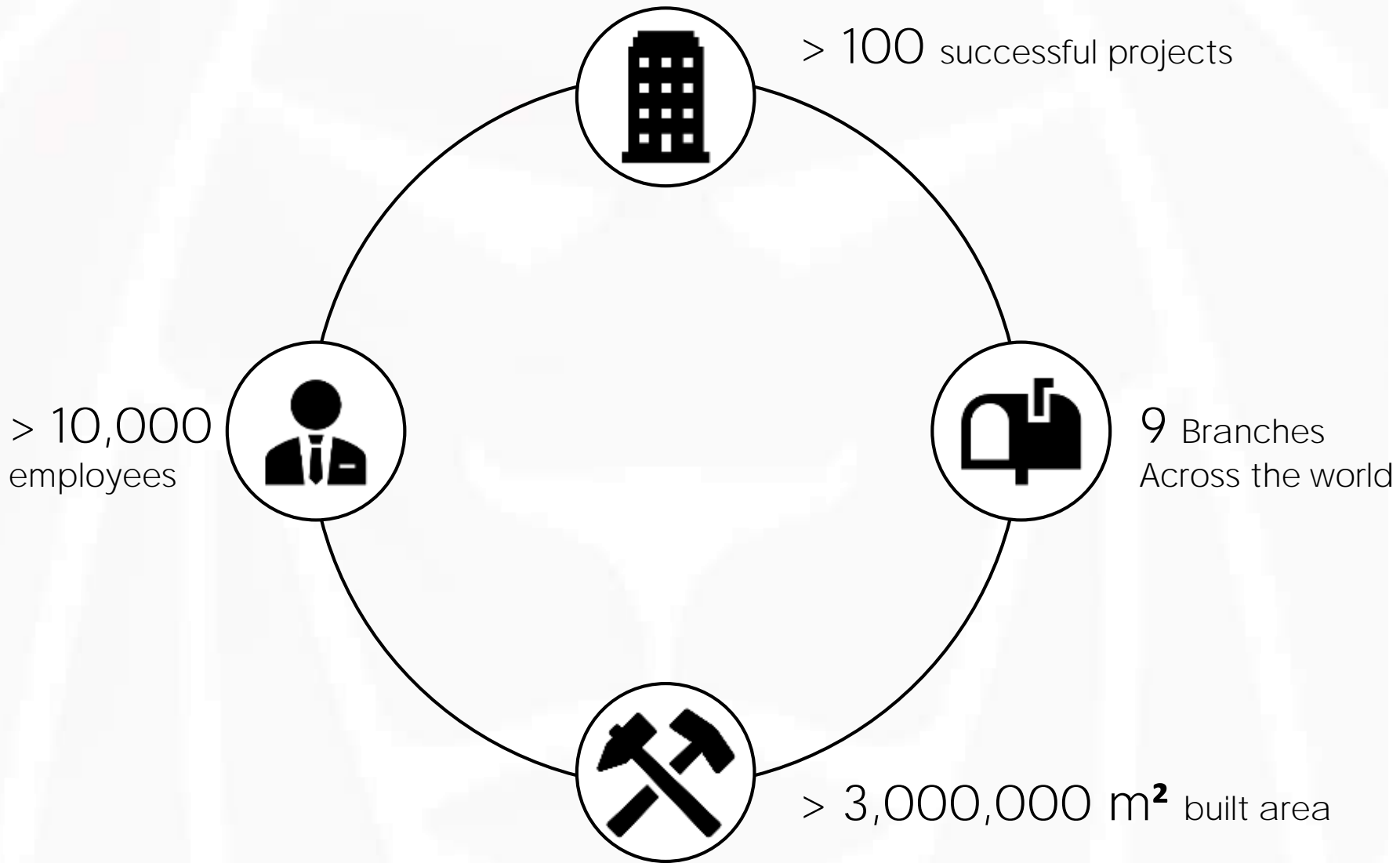
## 2018-Present

Domodedovo International Airport Multistorey  
Car Park Moscow, 66,300 m<sup>2</sup>  
Park Shopping Mall Rostov, 45,676 m<sup>2</sup>  
MR Group "Vodny" Housing Complex, 14,018 m<sup>2</sup>  
Mercedes Benz Car Factory, 100,062 m<sup>2</sup>  
Saratov Gagarin Airport, 35,269 m<sup>2</sup>  
Ceetrus Pushkino Shopping Mall, 103,816 m<sup>2</sup>  
Irkutsk Smart School, 27,950 m<sup>2</sup>  
MR Group "Fili City" Housing Complex, 156,898 m<sup>2</sup>  
MR Group "Fili Grad" Housing Complex, 12,992 m<sup>2</sup>  
Domodedovo International Airport  
Administrational Building Moscow, 12,000 m<sup>2</sup>

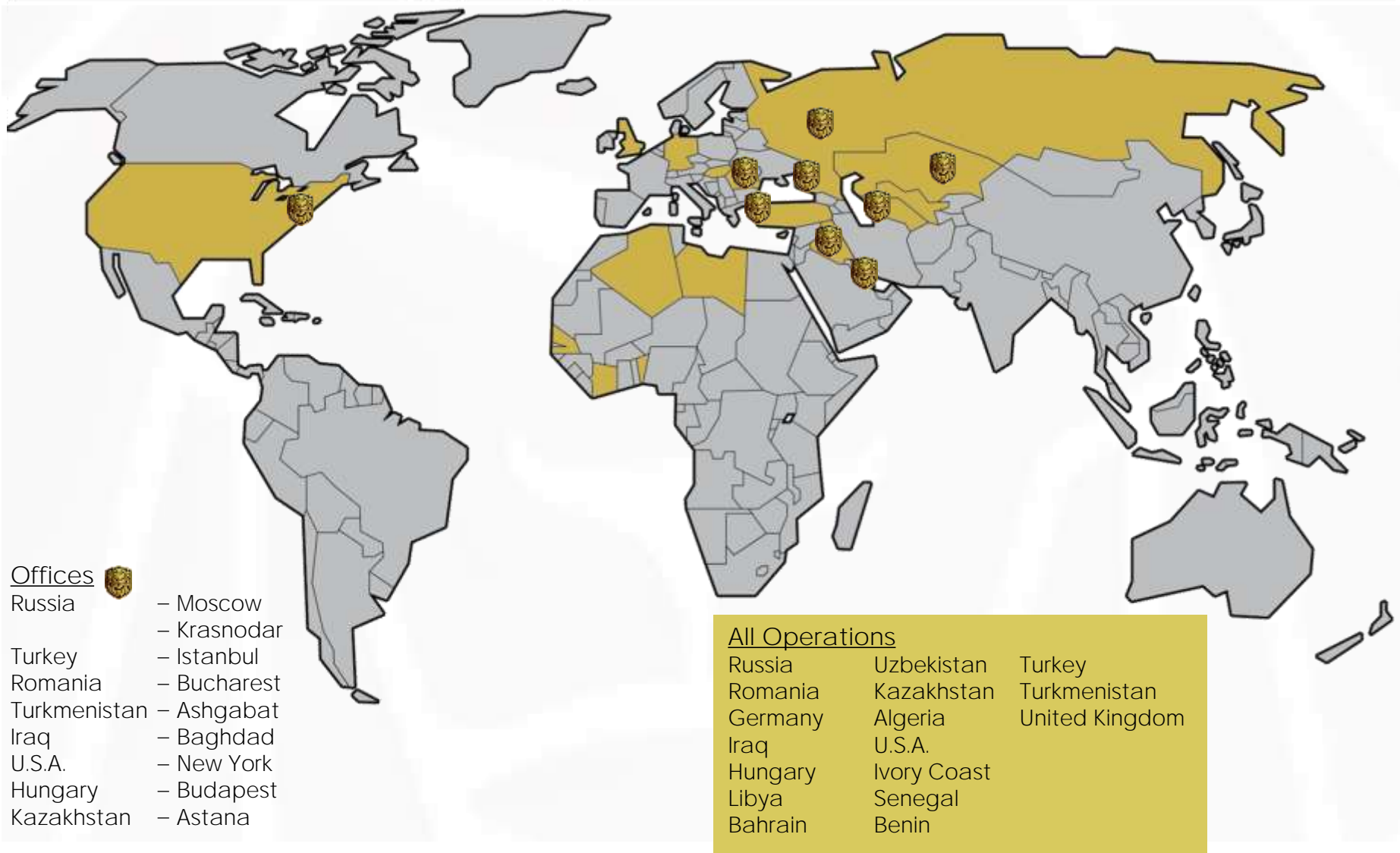
Donstroy "Freedom" Housing Complex, 106,598 m<sup>2</sup>  
Donstroy "Ogni" Housing Complex, 81,444 m<sup>2</sup>  
Lider Invest "Krilya" Housing Complex, 238,824 m<sup>2</sup>  
Rusagro Pig Production Factory Ussiriysk/  
Vladivostok, 177,889 m<sup>2</sup>  
Ikov Development "Dom Chkalov" Multifunctional  
Housing Complex and Shopping Mall, 67,697 m<sup>2</sup>  
Krasnodar Park (Central Park) Phase 2-3, 30,000 m<sup>2</sup>  
Uralkali Berezniki Potash & Magnesium Complexes  
Connecting Conveyor Line, 6.3 km  
INGRAD RIVERSKY HOUSING COMPLEX, 180,138 m<sup>2</sup>  
UST ILIMSK CELLULOSE PROCESSING PLANT, 200,000 m<sup>2</sup>  
Donstroy "Sobity" Housing Complex, 167,426 m<sup>2</sup>

**1.825.003 m<sup>2</sup>**

# Our Capabilities



# Global Presence



# Selected Projects

Residential and Multi-Purpose  
Projects

Dom Chkalov is a new high-rise building in the city center with special construction technology, which is known worldwide as top-down. This technology is required in order to provide the necessary level of security for the Chkalovskaya metro station. According to the project, one of the metro entrances / exits will be located inside a part of the shopping center. Since this project is a business class project, all materials are represented by well-known high-quality premium brands.



## DOM CHKALOV MULTIPURPOSE COMPLEX

Customer  
IKON DEVELOPMENT

Location  
MOSCOW,  
RUSSIAN FEDERATION

Type of contract  
EPC Turn Key

Area  
66 000 m<sup>2</sup>

Start  
02.2019

## OGNI RESIDENTIAL COMPLEX

Customer  
DON STROY INVEST

Location  
MOSCOW, RUSSIA

Area  
81 444 m<sup>2</sup>

Type of contract  
EPC Turn Key

Start  
09.2018

"Ogni" is the first and most affordable project of the new quarter of the Don-Stroy company in Ramenki. There is no place for stereotypes about the familiar comfort class. This is a stylish architecture and interior design, large-format glazing and efficient layouts.



The residential complex FREEDOM is located in the heart of the metropolis. The Zvenigorodskoye Shosse highway is less than 500 meters from the new building, and the TTK and Moscow City are nearby. The architecture of the complex is the embodiment of style and technology of the 21st century: decorative brick and clinker are effectively combined with plates of innovative tempered glass "stemalite", metal panels and large-format windows and stained-glass windows.



## FREEDOM RESIDENTIAL COMPLEX

Customer  
DON STROY INVEST

Location  
MOSCOW,  
RUSSIAN FEDERATION

Type of contract  
EPC Turn Key

Area  
106 598 m<sup>2</sup>

Start  
06.2018

## RIVERSKY RESIDENTIAL COMPLEX

Customer  
PJSC INGRAD

Location  
MOSCOW, RUSSIA

Area  
186 854 m<sup>2</sup>

Type of contract  
EPC Turn Key

Start  
04.2019

RiverSky is a business-class residential district with original architecture, modern engineering, well-thought-out planning solutions and unique housing formats. This project is the winner of the "Real estate market records 2019" award, as well as the winner of the international award "European Property Awards 2019".







"Sobytia" is a place for major events in life. Those that will make life bright and happy. This complex is characterized by spacious apartments with high ceilings and panoramic windows. The territory of the "Events" is closed to strangers and is under video surveillance. Pedestrian zones will be laid, 6 thousand square meter lawn will be planted as well as 73 trees, lighting of facades and walking alleys is connected. For residents will arrange sports and playgrounds with anti-noise screens. On the roofs of the 10-story sections, Donstroy organizes recreational areas with green areas.



## SOBITIE RESIDENTIAL COMPLEX

Customer  
DON-STROY INVEST

Location  
MOSCOW,  
RUSSIAN FEDERATION

Type of contract  
EPC Turn Key

Area  
167 426 m<sup>2</sup>

Start  
06.2019

## FILI CITY RESIDENTIAL COMPLEX

Customer  
MR GROUP

Location  
MOSCOW, RUSSIA

Area  
156 898 m<sup>2</sup>

Type of contract  
EPC Turn Key

Start  
01.2018

"ESTA Construction" company is constructing a new residential complex named "Fili City" with the total construction area of 156,898 sqm. Project is located in the very heart of Moscow City, near "Fili" metro station. Project is seen as one of the most prestigious residential complex projects of Moscow, which started in 2018.





The Wings residential complex is a business class project that allows us to believe that there is no limit to our capabilities. The project is a successful combination of ideological and technological elegance of modern architecture. The openness of forms and spaces, the connection of the interior with the landscape, abstractness - all this is expressed in the new plastic of the architectural space of the Wings residential complex. Three graceful shamrock towers, blur the boundaries with the outside world, create the effect of weightlessness, soaring and incredible unity with nature.



## KRYLYA RESIDENTIAL COMPLEX

Customer  
LIDER INVEST

Location  
MOSCOW,  
RUSSIAN FEDERATION

Type of contract  
EPC Turn Key

Area  
202 824 m<sup>2</sup>

Start  
04.2018

## MOSCOW CITY INTERNATIONAL TRADE CENTRE

Customer  
Investprofit

Location  
Saratov,  
Russian Federation

Area  
53 990 m<sup>2</sup>

Type of contract  
EPC Turn Key

Start  
01.2014 – 01.2016

Moscow City International Business Centre that is being constructed in Moscow has a great importance as being the second tallest building in Russia. All interior fine works of 86-storey residential building and 374 ultra luxury apartments was constructed by Esta Construction.

Technical Project Summary: It is fine works of 86-storey luxury residential apartment building project of which construction is still ongoing in Moscow City Region of Moscow. It is fine works of 374 residence including mechanical and electrical application.





MR Vodny Housing and Living Complex, located beside the Vodny metro station in Russian Federation capital of Moscow, shall be built by ESTA Construction as turn-key project on an area of 14,018 m<sup>2</sup>. European type suites with 1 and 3 bedrooms with areas of ranging from 39 to 97 m<sup>2</sup> shall be within MR Vodny Housing and Living Complex, which is a candidate to be one of the most prestigious and upscale housing projects in Moscow. There shall be kindergarten, cafes and restaurants along with a sports center in international standards within the project, which is standing out with its social infrastructure.



## MR VODNY RESIDENTIAL COMPLEX

Customer  
MR GROUP

Location  
MOSCOW,  
RUSSIAN FEDERATION

Type of contract  
EPC Turn Key

Area  
14 018 m<sup>2</sup>

Duration  
07.2018- 10.2018



## SERTSE STOLITSA RESIDENTIAL COMPLEX

Customer  
DON STROY

Location  
MOSCOW, RUSSIA

Area  
130 000 m<sup>2</sup>

Type of contract  
EPC Turn Key

Duration  
09.2015 – 10.2018

The most ambitious project in the history of the company “Don Stroy” covers an area of 145 000m<sup>2</sup> on the banks of the Moscow River. Apartment Complex “heart of the capital” situated in Shelepihinsky waterfront near the business center “Moscow City” and is a modern city quarter, including both residential area and a significant number of infrastructure and public spaces.



# Selected Projects

Cultural and Sports Complex  
Projects

## IRKUTSK SMART SCHOOL

Customer  
NOVIY DOM

Location  
IRKUTSK, RUSSIA

Area  
27 950 m<sup>2</sup>

Type of contract  
EPC Turn Key

Start  
03.2018

The smart school is Russia's first unique multifunctional educational complex located in Irkutsk on the banks of the Angara. The composition of smart shola includes cottages for sharing families, a kindergarten, elementary and high schools, sports and cultural and leisure complexes. The originality of the project is emphasized by its architecture. All buildings are arranged in a circle, forming a single space. In its center is a common area where students can spend their free time.





The stadium has the UEFA category 4-the highest category stadium, with the right to host the final part of the world Cup, European football Championships, as well as matches of all stages of the UEFA Champions League and the UEFA Europa League. According to the portal stadiumdb.com the stadium was nominated for the best stadium of the year 2016. Also, only two stadiums in the world have previously been ranked in the top three according to the results of both spectator and expert voting. In October 2017, Krasnodar stadium was shortlisted for the international competition The Stadium Business Design & Development Awards 2017 in the category "Best innovation" for the use of a video screen in the interior design of the stadium.



## KRASNODAR FC STADIUM

Customer  
Investstroy

Location  
Krasnodar,  
Russian Federation

Area  
120 000 m<sup>2</sup>

Type of contract  
EPC Turn Key

Duration  
04.2013 - 09.2016













# KRASNODAR CENTRAL PARK

Customer  
Investstroy

Location  
Krasnodar,  
Russian Federation

Area  
1 330 000 m<sup>2</sup>

Type of contract  
EPC Turn Key

Start  
09.2016

Status  
Completed

After the construction of the stadium of FC Krasnodar, the designers faced a difficult task - to arrange the space around the Premium facility. The specificity of the stadium is that several times a month a large number of people arrive there for matches. Central Park turned out to be an excellent solution to this problem. The park is recognized as the best project of the decade in the post-Soviet space. In 2019, it received the International Large Urban Parks Awards in the Eurasian Parks Awards nomination.







It is a class A+ project that was built on 12.000 m<sup>2</sup> area for Krasnodar Football Club with high quality materials and equipments. Project consists training grounds, administrative buildings, social and recreational facilities at European standards. It is an extremely luxurious football facility that was implemented with all the details carefully considered to ensure maximum comfort to Krasnodar Football Club players in order to spent camp period efficiently and effectively.

Technical Project Summary: It is a training camp and recreational complex made for Krasnodar Football Club; and it has 3 A+ quality buildings each of which having area of 4.000 m<sup>2</sup> and 8 training courts.



## KRASNODAR FOOTBALL CLUB TRAINING FACILITIES

Customer  
Krasnodar FC

Location  
CHETUK-ADYGEA  
AUTONOMOUS REPUBLIC

Area  
21 000 m<sup>2</sup>

Type of contract  
EPC Turn Key

Duration  
11.2007 - 12.2009



# Selected Projects

Shopping Malls



World-renowned French retail group IMMOCHAN aims to make a 120 million USD investment through its Shopping Mall project named SEC Aquarelle accomplished in Russia. The Project is located on federal Yaroslavskoye M8 highway, which is one of the motorways of key importance within Russia's Moscow region. The paramount French corporation accomplishes the Shopping Mall project with ESTA Construction in where a footfall of 8 million is anticipated for the first operating year. The shopping mall project with its ground-breaking ceremony was held on May 30 shall be built by ESTA Construction and completed within Q4 of 2018.



## AQUARELLE PUSHKINO MALL

Customer  
IMMO-PUSH

Location  
MOSCOW,  
RUSSIAN FEDERATION

Type of contract  
EPC Turn Key

Area  
103 816 m<sup>2</sup>

Start  
05.2017

## ROSTOV SHOPPING CENTER

Customer  
ANTRACITE, LLC

Location  
Rostov,  
Russian Federation

Area  
45 676 m<sup>2</sup>

Type of contract  
EPC Turn Key

Duration  
10.2016 – 08.2018

"Park" is located in the heart of the Northern housing estate of Rostov-on-Don and fits perfectly into the architecture of Cosmonauts Avenue. The atmosphere of the Park will give you the feeling of a mild, comfortable climate all year round. Style and elegance, comfort and warmth are the main components of shopping in the Park. Gallery events will gather citizens for various reasons: at a book fair, children's master classes, various exhibitions. There is always a lot of positive emotions, new discoveries and a sense of eternal summer. Our company completed the project from the design stage to civil engineering work.



Additional facility of Metropolis Shopping Mall that will rise above the heart of Moscow, just 10 minutes away from Red Square, draws attention due to not only being constructed in conformity with American-Turkish discipline but also rated as premium class shopping mall.

All engineering and construction works of Multi-Functional A+ class Shopping Mall with an indoor space of 63.000 m<sup>2</sup> in addition to a multiple-storey carpark with a space of 27.000 m<sup>2</sup> is being handled by our firm in turn-key basis.



## METROPOLIS II MALL

Customer  
TENGGRI DEVELOPMENT

Location  
MOSCOW-RUSSIA

Type of contract  
EPC Turn Key

Area  
98 382 m<sup>2</sup>

Duration  
09.2014 - 08.2016



## GORKIY GOROD SHOPPING MALL

Customer  
SBERBANK OAO

Location  
SOCHI, RUSSIA

Area  
32 000 m<sup>2</sup>

Type of contract  
EPC Turn Key

Duration  
08.2012 – 09.2013

"Gorki Gorod Mall" is the only project made with investments from Sberbank as a part of the preparation for the Winter Olympic Games 2014. V.V. Putin as well as D.A. Medvedev visited the mall several times during the construction and upon it's completion. The monolithic glass roof of the complex is the largest in Europe, and the third largest in the world. There is a beautiful water park situated under it. It has an artificial beach and a sea wave pool.



## SHOPPING MALL PROJECTS

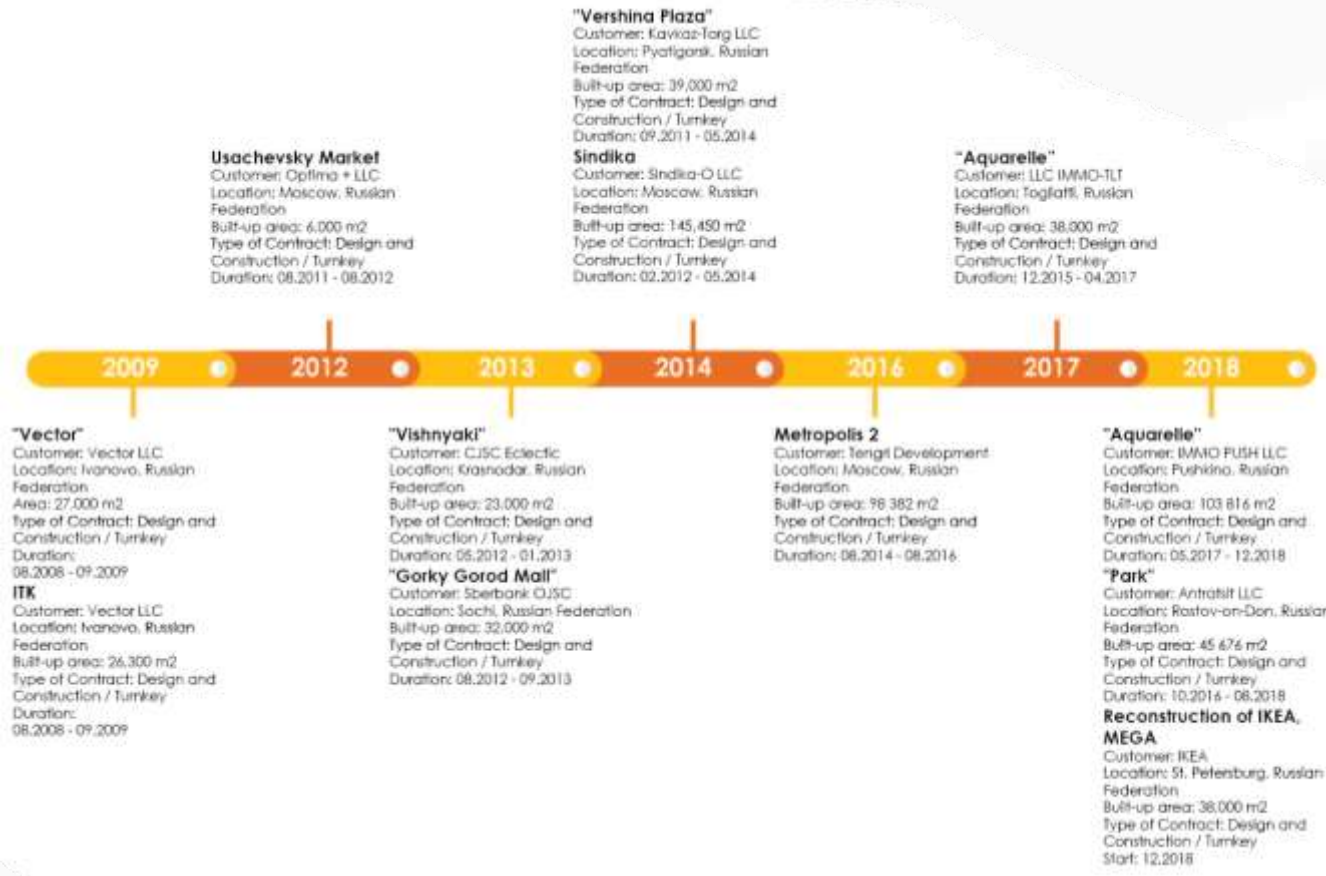
Customer

Location  
RUSSIA

Total Area  
622 624 m<sup>2</sup>

Type of contract  
EPC Turn Key

Duration  
08.2008-12.2018



## LOGISTIC CENTERS

Customer  
MAGNIT

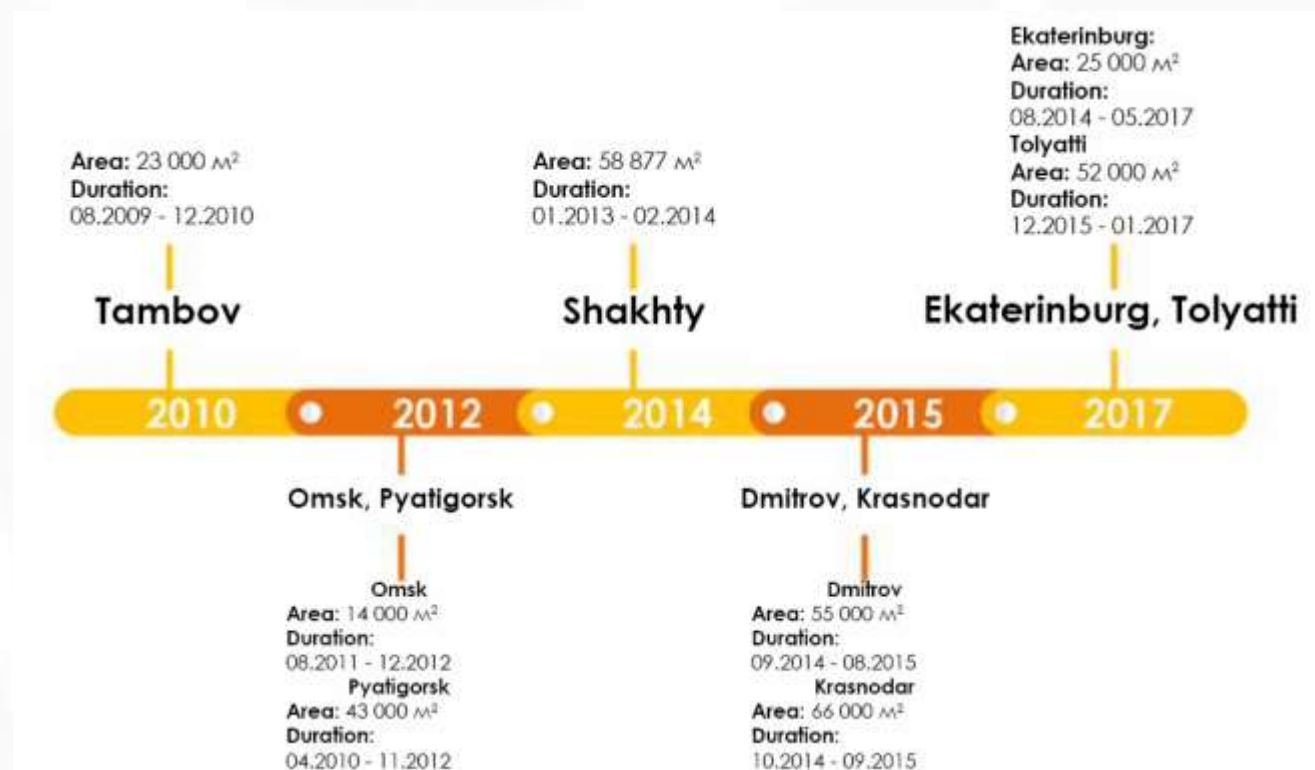
Location  
RUSSIA

Total Area  
293 877 m<sup>2</sup>

Type of contract  
EPC Turn Key

Duration  
08.2009-12.2015

Magnit is a leader in the number of stores and their location. The retail network has more than 20,000 points throughout Russia. From 2010 to 2017, ESTA Construction built 7 large logistics centers in different regions of Russia. All centers have dry and cold storage facilities, maintenance of trucks, as well as office buildings along with the necessary infrastructure.



## HYPERMARKET PROJECTS

Customer

Location  
 RUSSIA

Total Area  
 126 200 m<sup>2</sup>

Type of contract  
 EPC Turn Key

Duration  
 09.2006-12.2015





# Selected Projects

Airport Projects

## DOMODEDOVO INTERNATIONAL AIRPORT ADMINISTRATION BUILDING

Customer  
LLC DOMODEDOVO C.M.

Location  
MOSCOW, RUSSIA

Area  
12 000 m<sup>2</sup>

Type of contract  
EPC Turn Key

Start  
04.2018

Domodedovo is the second busiest airport of Russia. Just in 2019 more than 28 million passengers went through Domodedovo! With this turnover of people the infrastructure of the facility is of great importance. ESTA Construction has completed two projects for "Domodedovo" - the administrative building, as well as multi-level Parking for 1437 cars.



It is a multistory parking project built for Moscow Domodedovo International Airport. This airport is one of the 3 major airports rendering services to Moscow located at 42 km southeast of Moscow city center. As of 2013, it is the busiest airport in Russia and in Commonwealth of Independent States.

The 9-storey parking garage building to be built turnkey has an indoor area of 66 000 m<sup>2</sup>. When it is built, it shall host a capacity of 1437 vehicles. The carrier system is reinforced concrete. The porous glass coating system shall be applied on frontal.



## DOMODEDOVO INTERNATIONAL AIRPORT MULTY STOREY CAR PARK

Customer  
LLC DOMODEDOVO C.M.

Location  
MOSCOW,  
RUSSIAN FEDERATION

Type of contract  
EPC Turn Key

Area  
66 000 m<sup>2</sup>

Duration  
08.2015 - 01.2019

## SARATOV INTERNATIONAL AIRPORT

Customer  
Saraero – Invest

Location  
Saratov,  
Russian Federation

Area  
35 269 m<sup>2</sup>

Type of contract  
EPC Turn Key

Start  
06.2017 – 04.2019

The new Saratov airport was built taking into account urban architecture to create a single ensemble. Its capacity is 1 million passengers. Glass walls and metal structures create a sense of lightness and scale inside a three-story building.

The new airport, to be accomplished by ESTA Construction in Saratov, Russia, shall be constructed on an area of a total of 43,147 sq. m. and have the capacity of 1 million passengers when the project is finalized. The new Saratov Airport, to be constructed by ESTA predicated upon modern urban architecture, shall be comprised of 3-storeys, metal construction with glass as predominant element. The airport, with the terminal building area of 23,054 sq. m., the auxiliary building area of 18,093 sq. m. and a covered area of 2,000 sq. m., shall be constructed on a total area of 43,147 sq. m. The project shall also incorporate a parking lot with the capacity of 272 vehicles.





# Selected Projects

Hotel Projects

## TAMBOV HOTEL, SHOPPING AND BUSINESS CENTRE

Customer  
SINDIKATRANSKOMSTROY

Location  
Tambov,  
Russian Federation

Area  
19 937 m<sup>2</sup>

Type of contract  
EPC Turn Key

Duration  
10.2012 – 09.2013

The facility having the characteristic of being first hotel and multifunctional building made by Esta Construction covers a 3+ Stars class hotel with 110 bed capacity, a 10-floor administrative unit and office space as well as 5-storey shopping mall, exhibition halls, it has the characteristic of being first multifunctional complex in Tambov region and although it has been 5 years since its construction, it still keeps its popularity with its architecture different from other projects in the region.

Technical Project Summary: The hotel in the complex built for Grand Company as a 14-storey building having a hypermarket on the basement, shopping mall inbetween ground floor to 4th floor, business centre within 5th to 12th floor. Hotel section was built as 3+ stars class and 7-storey. In addition, two-storey exhibition hall are also available in the complex



As the second Esta Construction project made within the scope of Sochi 2014 Winter Olympic Games, it is a 3+ star Apart Hotel Project designed and built with inspiration from Northern Europe architecture with minimum impact on environment and without disturbing the balance of nature.

Its outer facade is covered with natural stones in coherence with natural vegetation of Rosa Khutor region where it is located; many details were added into facilities for maximum accommodation comfort of customers; and the highest quality raw materials and materials were used in construction of facilities. Technical Project Summary: It is a 7-storey Apart Hotel Project constructed at 3+ star standards and on turnkey basis for Transkomstroy Company. Having a reinforced concrete load-bearing system, the building's facade system is made of facade rendering and paint coat on decorative polystyrene and the building has 6 elevators in it.



## KRASNAYA POLYANA HOTEL AND TRAINING FACILITIES

Customer  
TRANSKOMSTROY

Location  
SOCHI-RUSSIAN  
FEDERATION

Type of contract  
EPC Turn Key

Area  
16 700 m<sup>2</sup>

Duration  
10.2012 - 09.2013



Adler Park Hotel, which is the second hotel project of our company in the framework of the 2014 Winter Olympics in Sochi, was designed and built according to a different concept, consisting of 23+ Stars villas covered with eucalyptus trees, so as not to harm the environment.

Having been built without cutting even 1 tree in the campus area in which every detail is planned and implemented carefully for the comfort and convenience of the customers, this environment-friendly facility uses wood-like facades and natural stones in harmony with natural environment. In order to provide a better accommodation experience for the visitors, in Adler Park Hotel Project which is located by the sea, also a self-contained pool was added in each villa. Technical Project Summary: It is the construction and landscaping project of an environment-friendly hotel of 23 villas of 4+ stars, undertaken for Galereya Maykop firm.



## ADLER PARK HOTEL

Customer  
TRANSKOMSTROY

Location  
SOCHI,  
RUSSIAN FEDERATION

Type of contract  
EPC Turn Key

Area  
23 972 m<sup>2</sup>

Duration  
09.2012- 06.2016

# Selected Projects

Healthcare Complex Projects

## HACI BAHATTİN DEMİRBİLEK DIAGNOSTIC CENTER

Customer  
Ministry of Health  
Turkey

Location  
İstanbul

Area  
10 346 m<sup>2</sup>

Type of contract  
EPC Turn Key

Duration  
07.2017 – 12.2018

Providing the latest and highest medical technology and pursuing the local and international standards, the Diagnostic Center will be serving better and more cohesive patient treatment, improved patient safety, greater efficiency and higher quality.

Main Services in the Diagnostic Center :

- Laboratory
- Cardiology
- Radiology
- Gastroenterology
- Endocrinology
- Genitourinary
- Gynecology
- Respiratory System
- Otorhinolaryngology
- Dental Investigation
- Eye investigation
- Sterilization for endoscopy



Vienna General Hospital (established in 1982) which is an initiative of Vamed Group of Companies, is one of the biggest and leading Women & Infant Health institutions in the World with approx. 30 clinics and institutes all around the globe. The Project that is being executed mutually with Vamed, will be one of the biggest Women & Infant Health institutions in Russian Federation.

This modern health care facility, with an approx. capacity of 1.000 persons, is being constructed in conformity with newest Technologies such as fully computerized tomography and MRT sections. In addition to all construction, reconstruction works of the facility, all engineering execution will be handled by our company.



## VAMED POLYCLINIC RENOVATION PROJECT

Customer  
VAMED GMBH

Location  
MOSCOW-RUSSIA

Type of contract  
EPC Turn Key

Area  
5 000 m<sup>2</sup>

Duration  
08.2014 - 08.2016

# Selected Projects

Industrial Projects

The Midia Gas Development Project comprises the Ana and Doina gas fields (320 Bcf P50 contingent resources) which were discovered in 2007 and 1995 respectively. Both are of latest Miocene to Dacian age, shallow marine sandstone reservoirs, some 120 km offshore Romania, in the XV Midia Shallow area where the water depths are of 70 meters.

The project consists of 5 production wells (1 subsea well at Doina field and 4 platform wells at Ana field) a subsea gas production system over the Doina well which will be connected through an 18 km pipeline. 126 km subsea pipeline will ensure the delivery of the gas from Ana platform to the shore, where 4.5 km underground pipeline will connect to the new gas treatment plant. The processed gas will be delivered into the NTS operated by Transgaz at the gas metering station to be found within the GTP.

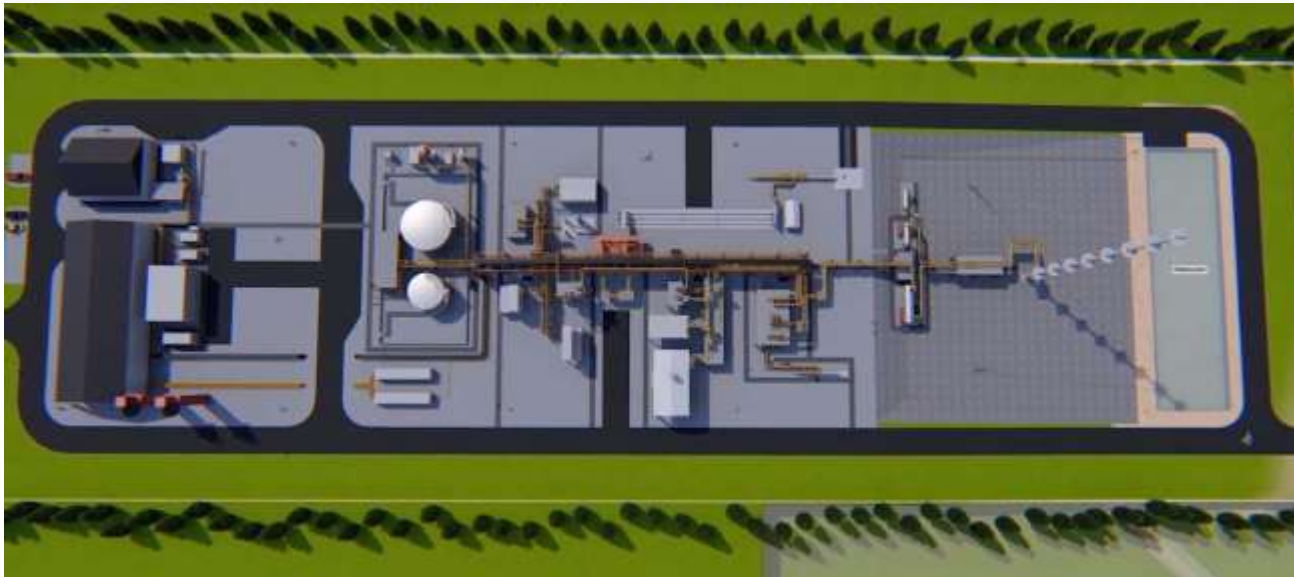
## MIDIA GAS DEVELOPMENT PROJECT

Customer  
Black Sea Oil & Gas

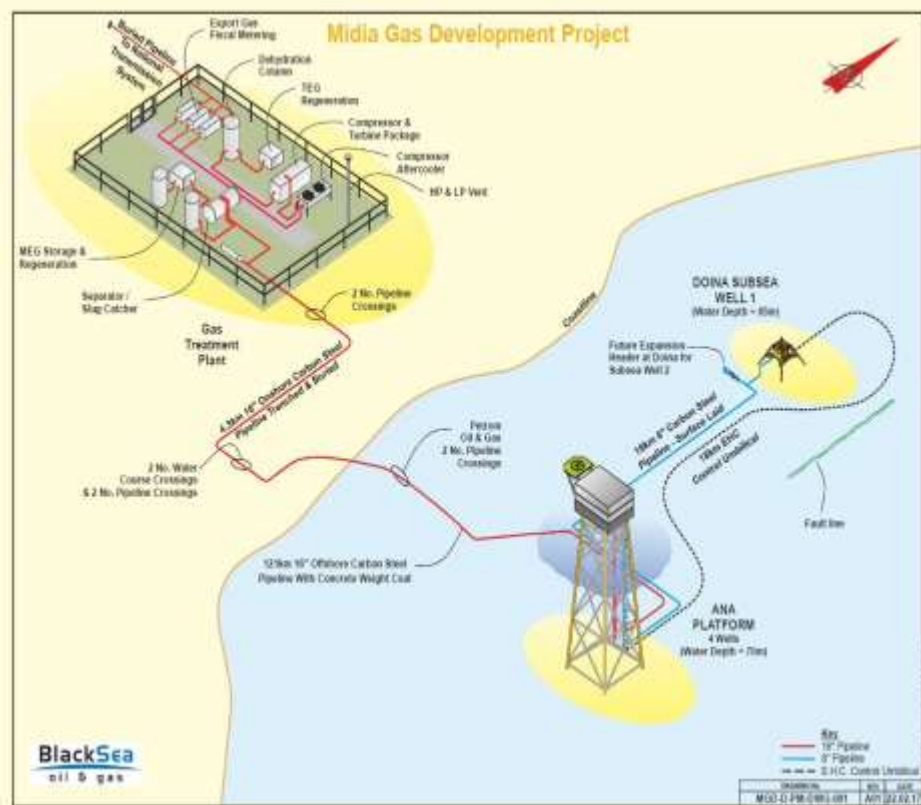
Location  
CONSTANTA / ROMANIA

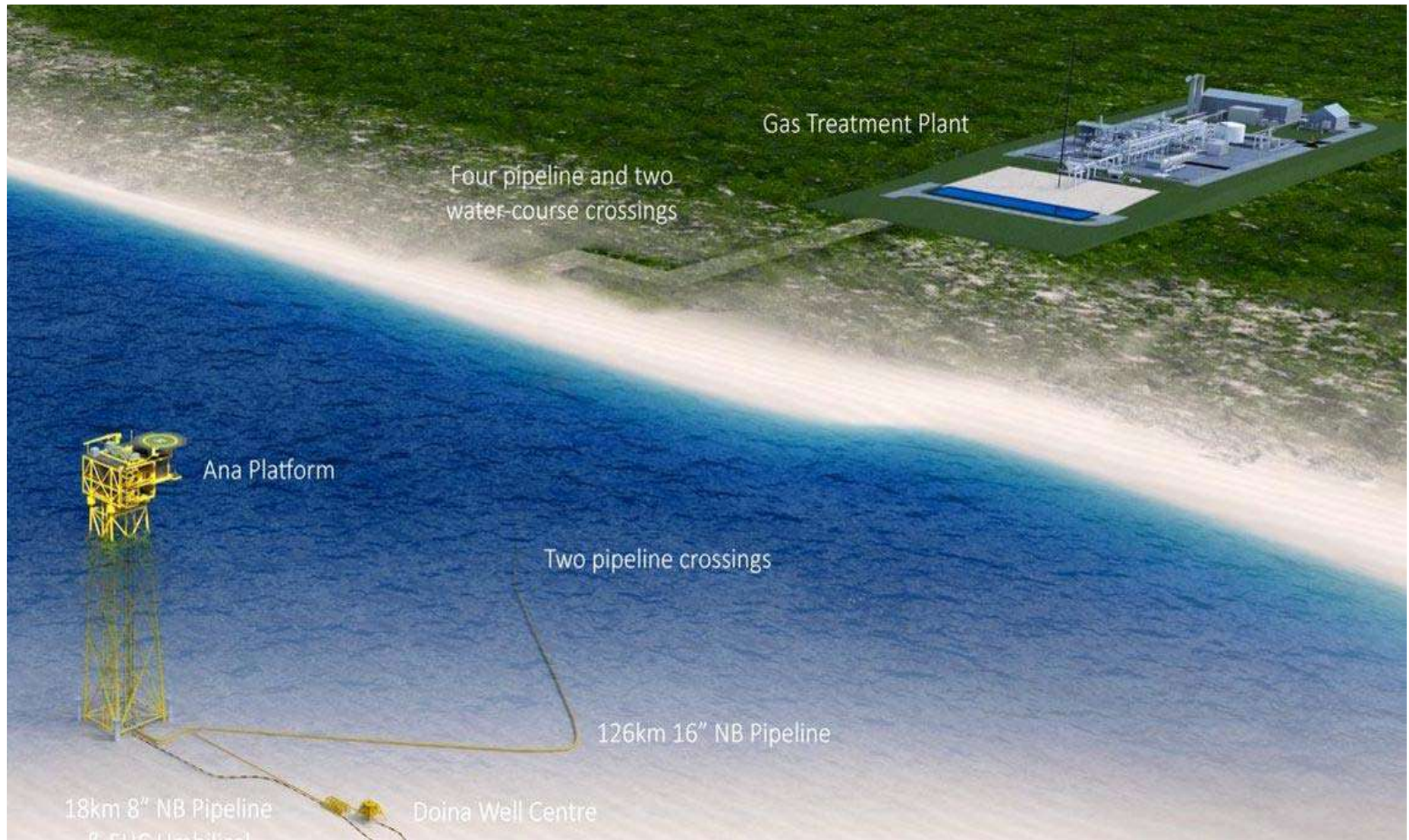
Type of contract  
EPC Turn Key

Duration  
10.2019 - 03.2021



By the end of 2018, BSOG has completed the necessary offshore activities including the drilling of the appraisal wells, the pipeline route and platform surveys, onshore activities including archaeological surveys and route surveys as well as the engineering studies including the conceptual Engineering and Front-End Engineering and Design. BSOG has also secured a long-term gas sales agreement with a Romanian subsidiary of ENGIE for the entire MGD Project gas production, reduced by the volumes that the producers are currently obliged to sell on the centralized market and a gas transmission contract with Transgaz for a contractual period of 15 years. In February 2019, BSOG's partners and shareholders have taken the Final Investment Decision in the MGD Project. The project will cost roughly \$400 m.







## Pulp and Paper Plant

Customer  
JSC ILIM Group

Location  
IRKUTSKI REGION,  
RUSSIA

Capacity  
600,000 tones / year

Type of contract  
EPC Turn Key

Duration  
05.2019 - 12.2021

In May 2019, Esta Construction have signed a contract with JSC ILIM Group for construction works as part of the implementation of the "Bolshoi Ust-Ilimsk" investment project.

The investment project " Bolshoi Ust-Ilimsk" provides for the creation of a new plant for the production of cardboard and packaging materials with a capacity of 600 thousand tons per year. Total investments are about 1 billion dollars. The implementation of the project is planned until the end of 2021.

As a result of the implementation of the "Bolshoi Ust-Ilimsk" project, the Ust-Ilimsk plant will be among the world's largest producers of pulp and paper products. Greater Ust-Ilimsk has been assigned the status of a Priority Investment Project in the field of forest development.





**НОВАЯ КАРТОНОДЕЛАТЕЛЬНАЯ МАШИНА**

**«Большой Усть-Илимск»**  
**+600 тыс. тонн/год**

In 2018 Esta Construction has concluded an agreement with the world's largest potash fertilizer producer PJSC Uralkali for the construction of a 6.24 km long main conveyor tract

The conveyor is designed to transport salvinite ore from the Ust-Yavinsky mine to the beneficiation plant of the Perm region.

Scope of works contain installation and commissioning of full conveyor line.



## URALKALI MAIN CONVEYOR LINE

Customer  
PJSC Uralkali

Location  
PERMSKI REGION,  
RUSSIA

Length  
6,5 km

Type of contract  
EPC Turn Key

Start  
11.2018



# MEAT PROCESSING COMPLEX

Customer  
RUSAGRO Group

Location  
PRIMORSKI REGION /  
RUSSIA

Type of contract  
EPC Turn Key

Area  
177 889 m<sup>2</sup>

Start  
09.2018

Rusagro Group of Companies is one of the leading agricultural holdings in Russia. His meat business is one of the fastest growing in the group. For 2020, this is the third Russian pork producer with a market share of 5.4%. Since 2018, ESTA Construction has been building the large meat processing complex Rusagro, located in the Primorsky Territory.





Вид 2



In 2018, Esta Construction has signed a Contract with the RUSAGRO Group of Companies, Russia's largest agricultural holding, which holds leading positions in sugar production, meat breeding, plant growing and oil and fat business.

The contract was concluded for the construction of a meat processing plant in Primorsky Krai/Russia, with a total area of 151,889 m<sup>2</sup>. The scope of work on a turnkey basis includes the installation and commissioning of all technical equipment of the complex.



## MEAT PROCESSING COMPLEX

Customer  
RUSAGRO Group

Location  
PRIMORSKI REGION /  
RUSSIA

Type of contract  
EPC Turn Key

# NAPHTHA TREATING PLANT

Customer  
KASO Oil Services

Location  
Divaniyah, Iraq

Type of contract  
EPC Turn Key

Duration  
02.2017 - 12.2019

Esta is the EPC contractor of a grass-root skid mounted 12000 BPSD whole naphtha treating plant with related ancillaries in Diwaniyah / Iraq. The total capacity of the plant is 12,000 BPSD and the project is planned to be operational in 26 months after effective date of the contract.





21,851 BPSD (144.75m<sup>3</sup>/hr.) Vacuum distillation unit; to produce Vacuum Residue & Vacuum Gas Oil for its Bitumen Plant in addition to constructing Reduced crude unloading & Vacuum Gas Oil loading systems respectively.

Second phase of the Bitumen Blowing Project

Phase One : Biturox ® Bitumen Plant

Phase Two : Vacuum Distillation Plant



## Vacuum Distillation Plant

Customer  
Al Wataniya Group

Location  
Samawah, Iraq

Capacity  
21,851 BPSD

Type of contract  
EPC Turn Key

Duration  
06.2018 - 12.2019



## MERCEDES BENZ "SIRIUS" CAR FACTORY

Customer

Mercedes Benz / Daimler

Location

Povarovo, Moscow,  
Russian Federation

Area

100 062 m<sup>2</sup>

Type of contract

EPC Turn Key

Duration

06.2017 - 04.2019

Sirius is the first automobile factory to be completed by ESTA Construction. The investment value of the Project amounted to 250 million euros. The production capacity of Sirius is 25 thousand cars of class "E" and "SUV". The car factory was named in honor of the brightest star in the night sky - Sirius.









Grass root asphalt blowing plant with related ancillaries in Iraq.

The proposed plant should consist of the following two major facilities & will be realized in two phases

Phase One : Biturox ® Bitumen Plant

Phase Two : Vacuum Distillation Plant



## Bitumen Blowing Plant

Customer  
Al Wataniya Group

Location  
Samawah, Iraq

Capacity  
500,000 tones / year

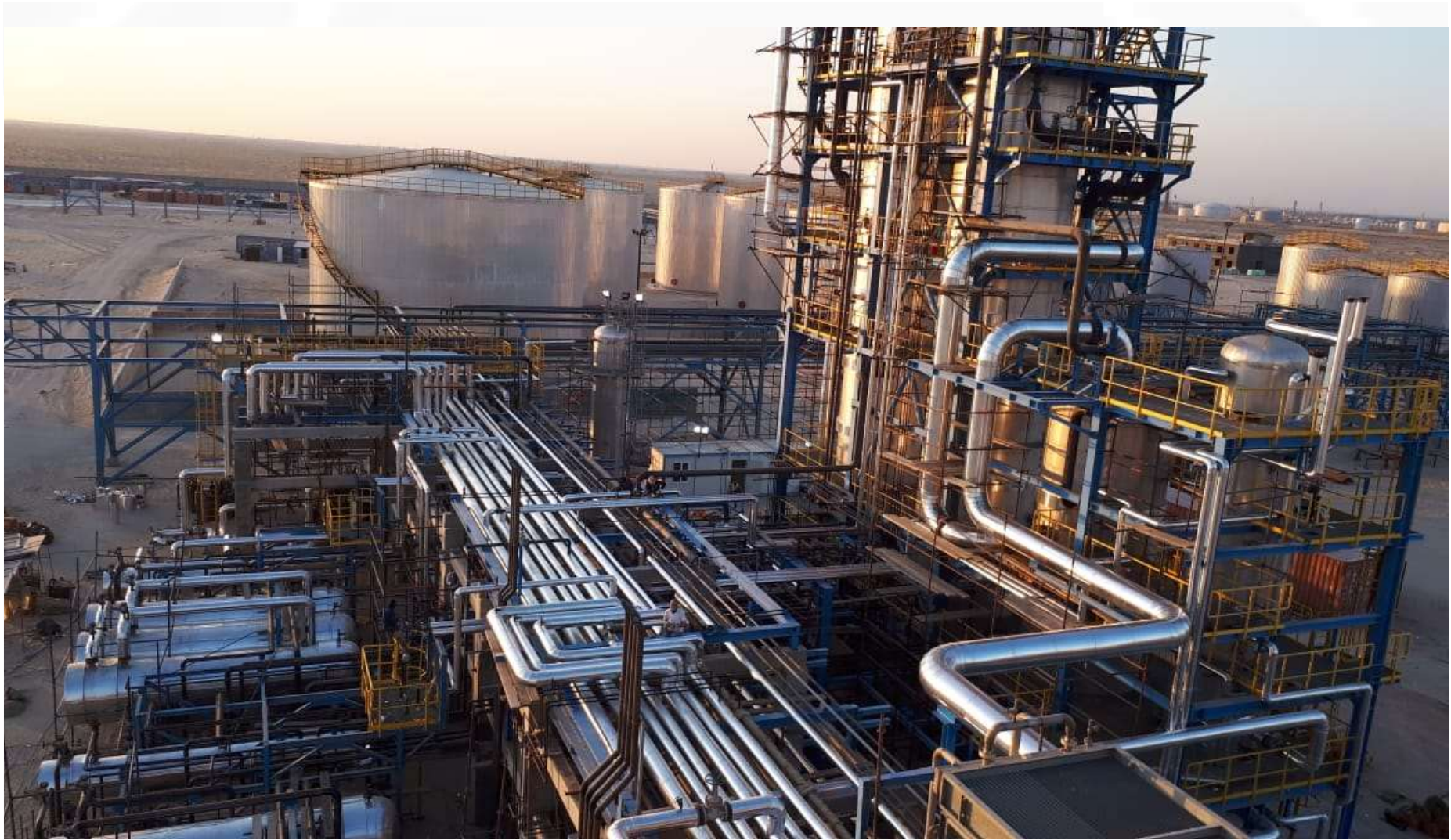
Type of contract  
EPC Turn Key

Duration  
08.2016 - 05.2018



















## POWER PLANT 50 MW

Customer  
Al Wataniya Group

Location  
SAMAWAH / IRAQ

Capacity  
50 MW

Type of contract  
EPC Turn Key

Duration  
05.2017 - 05.2018

Power plant is located in Samawah, Iraq, inside the borders of Cement Plant and it will have 50 MW capacity. The project was completed within 12 months. Generators and other equipment were supplied by European manufacturers.











# NAPHTHA TREATING PLANT

Customer  
KASO Oil Services

Location  
Divaniyah, Iraq

Type of contract  
EPC Turn Key

Contract Duration  
02.2019 - 03.2021

Esta is the EPC contractor of a grass-root skid mounted 12000 BPSD whole naphtha treating plant with related ancillaries in Diwaniyah / Iraq. The total capacity of the plant is 12,000 BPSD and the project is planned to be operational in 26 months after effective date of the contract.



21,851 BPSD (144.75m<sup>3</sup>/hr.) Vacuum distillation unit; to produce Vacuum Residue & Vacuum Gas Oil for its Bitumen Plant in addition to constructing Reduced crude unloading & Vacuum Gas Oil loading systems respectively.

Second phase of the Bitumen Blowing Project

Phase One : Biturox ® Bitumen Plant

Phase Two : Vacuum Distillation Plant



## Vacuum Distillation Plant

Customer  
Al Wataniya Group

Location  
Samawah, Iraq

Capacity  
21,851 BPSD

Type of contract  
EPC Turn Key

Duration  
06.2018 - 12.2020

Esta is the contractor of a this grass root cement plant with the capacity of 6.000 tons/day capacity. Main process equipment were supplied from European manufacturers. Yearly capacity of plant is 2.000.000 t/year

## CEMENT PLANT PROJECT

Customer  
Al Wataniya Group

Location  
Samawah, Iraq

Capacity  
6.000 tons per day

Type of contract  
EPC Turn Key

Duration  
01.2016 - 06.2018























# OUR CERTIFICATES







# OUR AWARDS

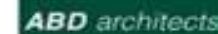


E  
CON

EST  
CONSTRUCTION



# OUR PARTNERS





Contacts:

Acibadem Mah. Cecen Sok. No:27/1

Uskudar/Istanbul

Phone: +90 216 681 00 37

secmo@estacons.ru

<http://www.estacons.com/>